

The Roller Bearing 10 double sliding door system is an adjustable glass door system which is slimline in design for maximum visibility yet robust enough to carry large 200kg glass panels.

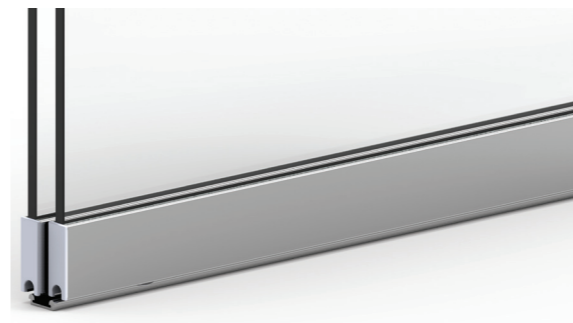
Ideal for use in large cabinets and vanities, reception windows and display windows, the Roller Bearing 10 sliding door system is best suited to 1 and 2 door applications. Alternatively can be used in 3 or 4 door applications by running multiple panels on each track or multiple tracks.



TRACK VIEW



GUIDE VIEW



TECH SPECS

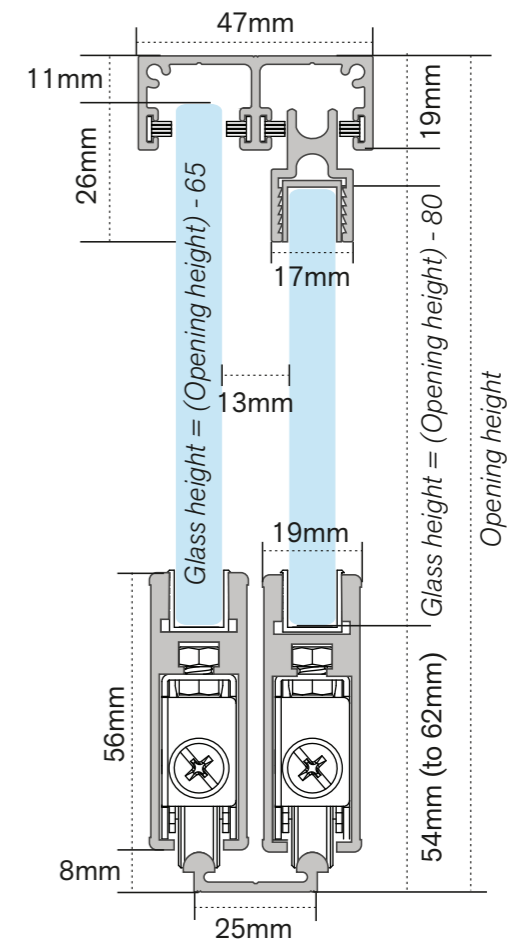
- Included Feature
- Optional Extra

System Type	Multi-Sliding	External door	
Max. Weight Door/Panel	200kg	Internal door	
Door/Panel width (mm)	Up to 2000	Wardrobe doors	
Door Thickness (mm) min.	10-10.38	Cupboard doors	○
Track Length (mm)	4500mm	Glass Cabinet doors	○
Suits No. of doors	2	Wall mounted track	
Track Type	Aluminium - anodised/mill finish	Top mounted track	
		Floor fixed track	○
		Top guide	○
		End stop	
		Soft-close	
		Pelmet	
		Max Door Size (m²)	3.35
		Max Door Height (mm)	2400
		Door Width (mm)	Half Opening Width + 50mm (Will give a 100mm overlap)

ROLLER BEARING 10 COMPONENTS & REPLACEMENT PARTS

	TT02512: Aluminium Double Headguide with Pile - 4500mm - Clear Anod.		TT02912: Aluminium Head Race - 4500mm - Clear Anod.
	TT05608: Nylon End Plate - Black		TT05613: Nylon End Plate - Bright Silver
	TT05812: Aluminium Race Section with Pile - 4500mm - Clear Anod.		TT08800: Glazing Wedge 100m
	P51000: Adjustable Sheave (Nylon Wheel)		P51500: Adjustable Twin Roller Sheave (Nylon Wheel) (200kg)
	TT05606: Nylon End Plate - White		TT05712: Aluminium Double Track - 4500mm - Clear Anod.
			TT08810: Glazing Wedge per m

ARCHITECTURAL DRAWINGS



GLASS PREPARATION DETAILS:

Cowdroy recommends all glass have polished edges and rounded or tipped corners.

Double Track for 10mm & 10.38mm laminate glass panels

END VIEW