

cowdroy

ROBE RANGE

SLIDING ROBE DOOR TRACK RANGE | MEDIUM DUTY | 50KG PER DOOR



WARDROBES

CUPBOARDS

INTERNAL DOORS



ROBEMAKER

FLAWLESS FINISH AND EASY INSTALL

Robemaker is a smooth and quiet bottom rolling system suitable for 2, 3 and 4 door wardrobe applications up to 50kg.

The attractive slimline design features a polypropylene cover strip for a concealed aesthetic finish, which allows for easy installation and access when required.

For multiple doors all opening to one end, consider the **Robemaker Multi** which offers add-on tracks and multiple-door functionality.

APPLICATION

Suits:	2-4 doors
Max. Door Width:	820mm wide
Door Thickness:	30-40mm

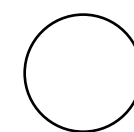


Cupboards



Wardrobes

COLOURS



White



Clear Anodised

ROBEMAKER

**50kg
PER PANEL**



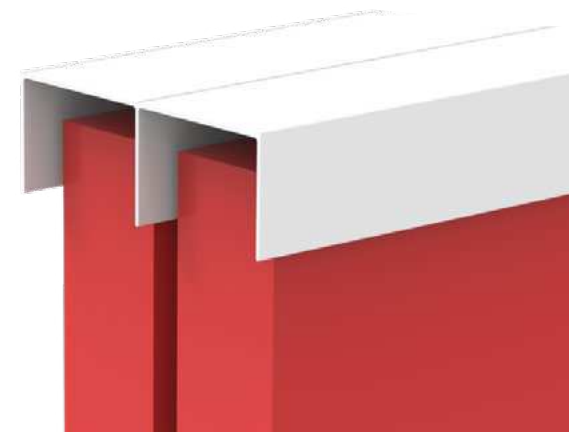
SMOOTH ROLLING ACTION WITH SIMPLE SCREW DOWN TRACKS

Robemaker allow panels to glide in a rolling action and is suitable for interior panels up to 50kg.

The engineered adjustable roller sheave with high performance bearings achieves a low operating force that is lighter, smoother and faster. Prilled drilled tracks allows simple screw down application, making installation easy.

All these combined features make Robemaker the perfect system for wardrobes, cupboards and internal doors use.

ROBEMAKER



FLAWLESS FINISH COVER STRIP

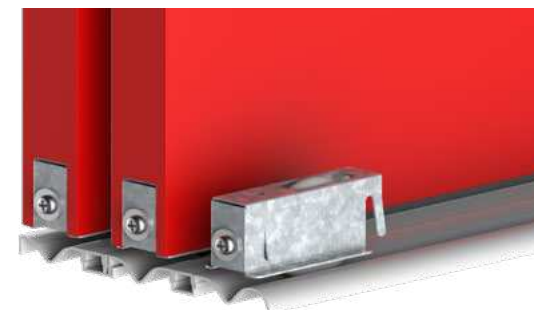
The attractive slimline design features a bottom cover strip to provide the ultimate aesthetic flawless finish, hiding all unsightly track fixing screws and concealed wheels.

SIMPLE INSTALLATION

Simple installation and ease of adjustment at your finger tips. Robemaker's smooth running adjustable roller sheaves can be easily assembled and mounted to panels.

ROBEMAKER MULTI

ROBEMAKER MULTI



VERSATILE ADD-ON TRACK FUNCTIONALITY

Robemaker Multi incorporates a unique and functional add-on track capability, allowing multiple doors to be opened all to the same end, maximising access and visibility. Robemaker Multi is ideal for large wardrobes and storage doors.

OPTIONAL EXTRAS

THE HUSH ROLLER

A new optional extra for the Robemaker is the TT58700 "Hush" Wheel Assembly. Comprising a soft tyre compound, the "Hush" wheel assembly offers a much quieter roll than standard nylon based tyres, making Robemaker "Hush" the ideal choice for bedroom wardrobes.

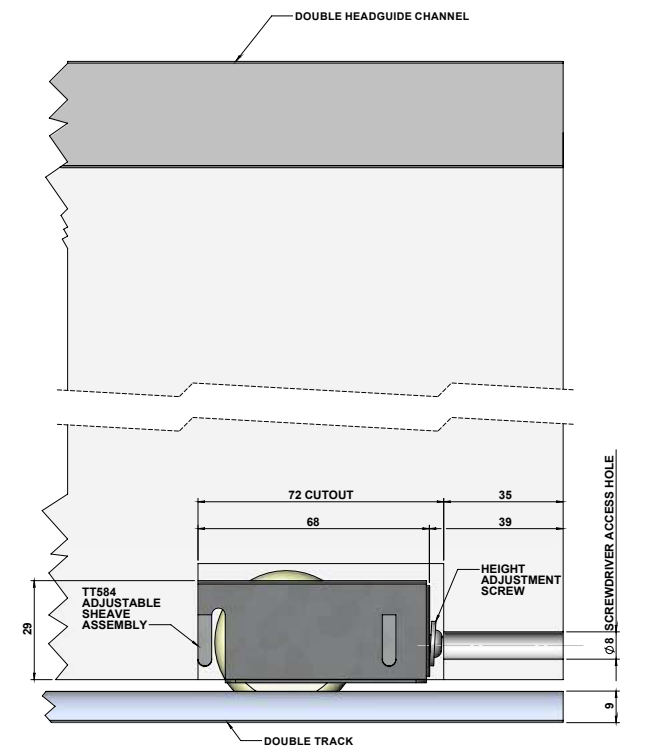


THE SOFT CLOSE SILENCE

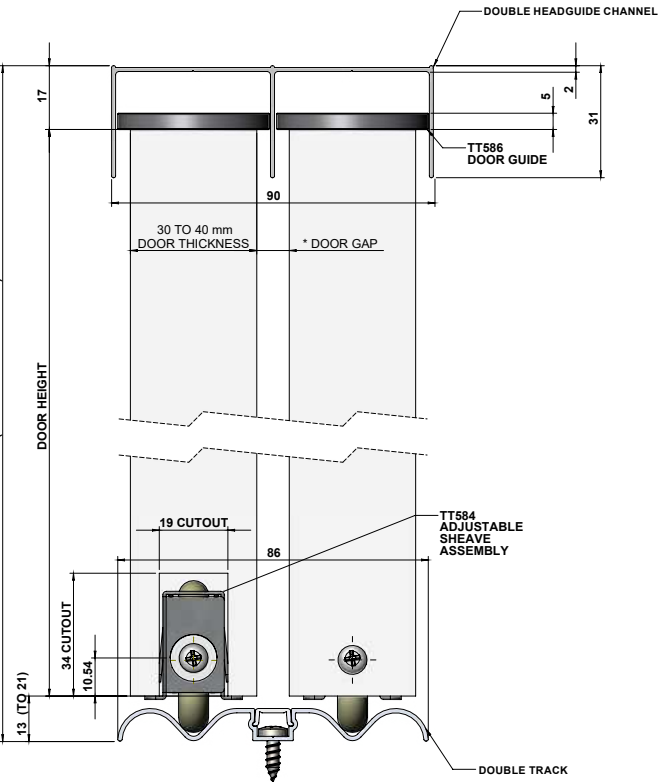
Used in conjunction with the Robemaker system, the 2-door pair of soft-closing dampeners and catches integrate seamlessly. The dampeners fit concealed in the top track while the catches locate unobtrusively to the top of the door. When the doors are closed their travel is slowed to almost a halt and then pulled closed to complete a smooth, silent and soft-closing operation for those little fingers.

TECH DRAWINGS

ROBEMAKER



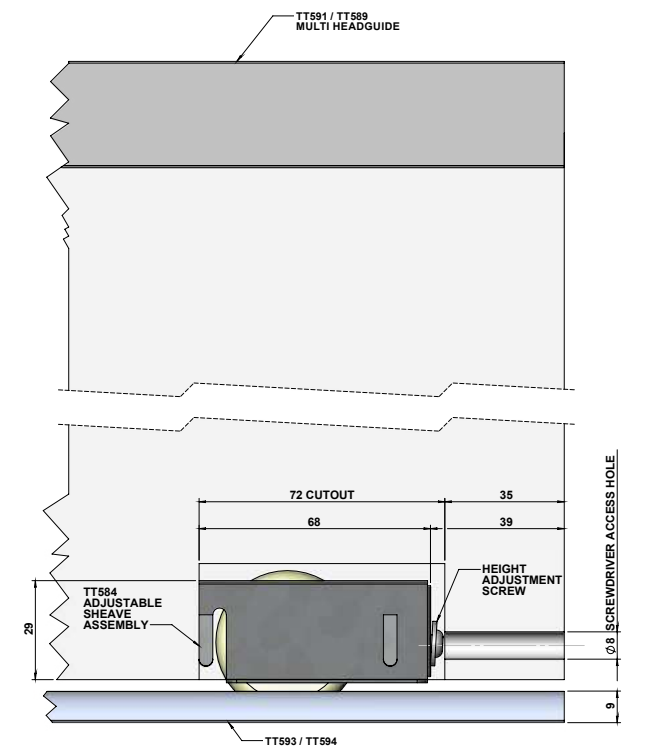
BACK VIEW



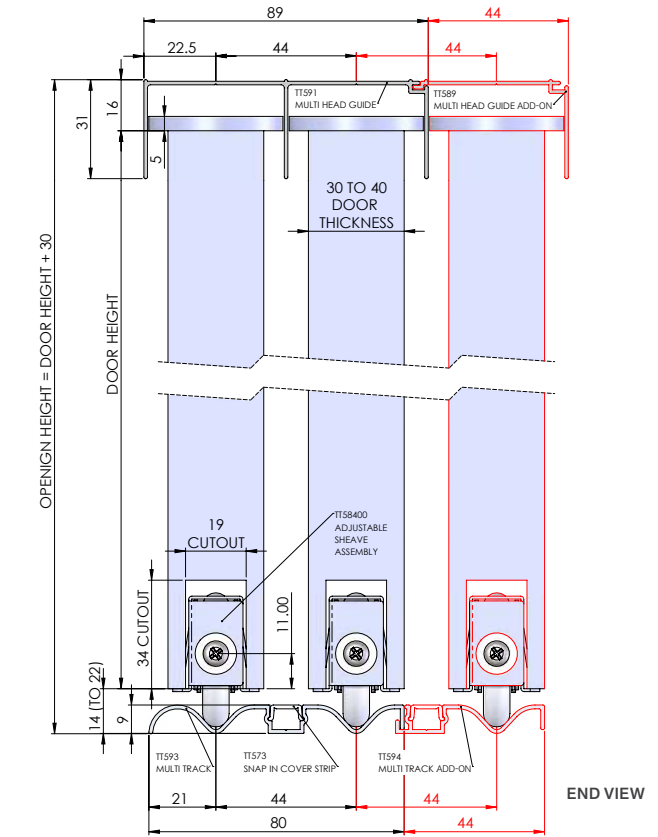
END VIEW

Roller Cut-Out Details:
34mm(H) x 72mm(W) x 19mm(D)

ROBEMAKER MULTI



BACK VIEW



END VIEW

Roller Cut-Out Details:
34mm(H) x 72mm(W) x 19mm(D)

TECH SPECS

ROBEMAKER

<div><div></div>Included Feature</div> <div><div></div>Optional Extra</div>		External door	
		Internal door	
		Wardrobe doors	<div></div>
		Cupboard doors	<div></div>
		Glass Cabinet doors	
		Wall mounted track	
		Top mounted track	
		Floor fixed track	<div></div>
		Top hung wheel	
		Bottom rolling wheel	<div></div>
		Door side fix	
		End pivoting	
		Centre pivoting	
		Bottom guide	
		Top guide	<div></div>
		End stop	
		Soft-close	<div></div>
		Pelmet	
System Type	Multi-Sliding		
Max. Weight Door/Panel	50kg (reg. tyre) 40kg (hush tyre)		
Door/Panel width (mm)	Up to 820		
Door Thickness (mm) min.	30-40		
Track Length (mm)	Up to 3240mm		
Suits No. of doors	2 to 4		
Track Type	Aluminium white/ anodised		

PACK / SET

2 DOORS 1620MM C/A	P58112: Packaged Set for 2 Doors - 1620mm track Clear Anod.
2 DOORS 1620MM WHITE	P58116: Packaged Set for 2 Doors - 1620mm track White
3 DOORS 2420MM C/A	P58122: Packaged Set for 3 Doors - 2420mm track Clear Anod.
3 DOORS 2420MM WHITE	P58126: Packaged Set for 3 Doors - 2420mm track White
4 DOORS 3240MM WHITE	P58136: Packaged Set for 4 Doors - 3240mm track White
THE COMPONENTS PACK	P58500: Components Set for Single Door - no track

ROBEMAKER MULTI

<div><div></div>Included Feature</div> <div><div></div>Optional Extra</div>		External door	
		Internal door	
		Wardrobe doors	<div></div>
		Cupboard doors	<div></div>
		Glass Cabinet doors	
		Wall mounted track	
		Top mounted track	
		Floor fixed track	<div></div>
		Top hung wheel	
		Bottom rolling wheel	<div></div>
		Door side fix	
		End pivoting	
		Centre pivoting	
		Bottom guide	
		Top guide	<div></div>
		End stop	
		Soft-close	<div></div>
		Pelmet	
System Type	Multi-Sliding		
Max. Weight Door/Panel	50kg (reg. tyre) 40kg (hush tyre)		
Door/Panel width (mm)	Up to 820		
Door Thickness (mm) min.	30-40		
Track Length (mm)	5000		
Suits No. of doors	Multiple		
Track Type	Aluminium white/ anodised		

PACK / SET

3 DOORS 2420MM WHITE	P59126: Packaged Set for 3 Doors - 2420mm Multi track White
THE COMPONENTS PACK	P58500: Components Set for Single Door - no track

*Loose Tracks and Components available.
Please refer to catalogue or website for more information.





SLIDING TRACK DESIGNED FOR MIRROR & GLASS

A sliding track system designed for mirror and decorative glass panel doors in 2, 3 or 4-door applications.

The extruded aluminium mirror door frame includes horizontal rail trims and vertical handle trims with finger grip. It also features rubber bumper inserts for anti-collision and protection for the vertical frame and jamb.

All aluminium extrusions are pre-finished in a durable powdercoat white.

APPLICATION

Suits:	2-4 doors
Max. Door Width:	820mm wide
Door Thickness:	19mm (mirror panels)

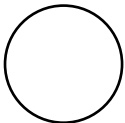


Cupboards



Wardrobes

COLOURS



White

MIRROR ROBE

MIRROR ROBE



SIMPLE INSTALLATION & EASE OF ADJUSTMENT

Enjoy easy installation with Mirror Robe's adjustable roller assembly which locates easily into the rear of the door frame for quick access.

Additionally the easy height adjustment screws are fully accessible for convenient in-situ adjustments.

FEATURES

ANTI-COLLISION & PROTECTION

The extruded aluminium mirror door frame includes horizontal rail trims and vertical handle trims with finger grip as well as a rubber bumper insert for anti-collision and protection of the vertical frame and jamb.



SIMPLY CONCEALED

Enjoy the convenience of simple screw-down tracks fitting with a cover strip to conceal the screws for a flawless finish. Or simply lift the cover strip for quick screws access when required.

ELIMINATE DOOR JUMPING

Door jumping completely eliminated with the use of anti-jump and anti-lift screws built into the tracks.



STRONG & ADAPTABLE

The robust wheel assembly consists of engineered polymer conical shaped wheels with high performance steel bearings and adjustment screws for an improved operation.

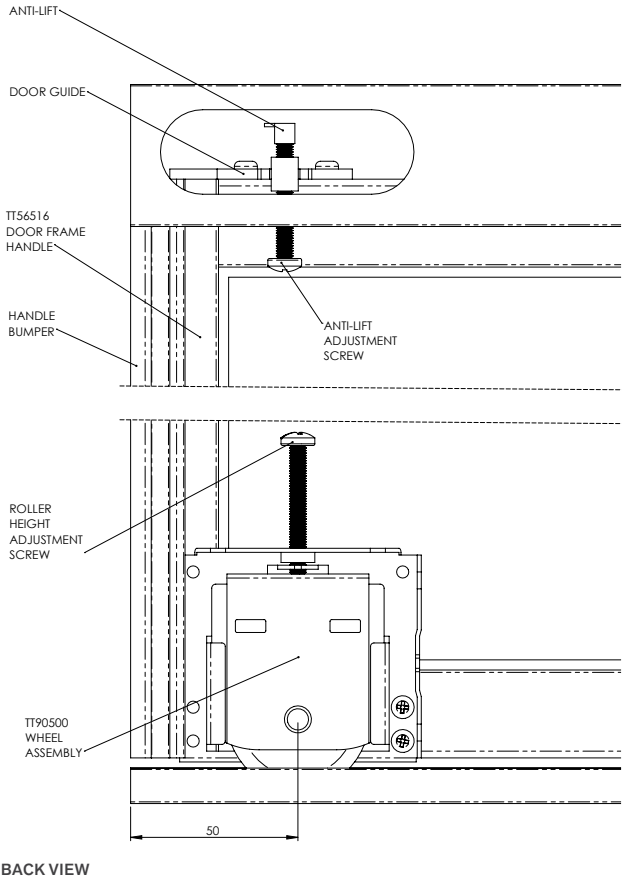
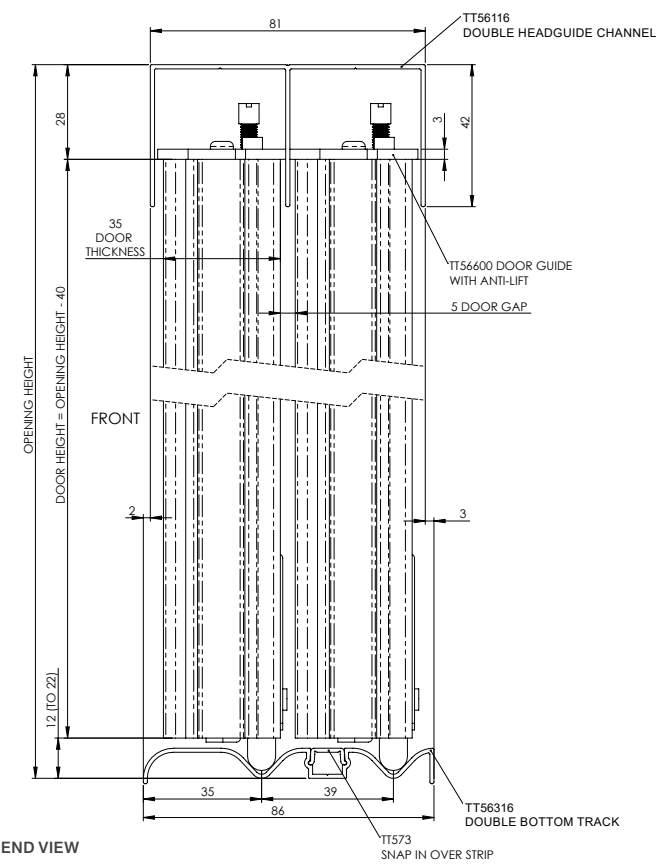
DUAL APPLICATION

Mirror Robe is suitable for door constructions including Mirror and also Timber panels of up to 19mm, making it a flexible system for dual applications.



TECH INFORMATION

ARCHITECTURAL DRAWINGS



TECH SPECS

●	Included Feature
○	Optional Extra

System Type	Multi-Sliding
Max. Weight Door/Panel	50kg
Door/Panel width (mm)	Up to 900
Door Thickness (mm) min.	19 (timber) 4-6 (mirror)
Track Length (mm)	5000mm
Suits No. of doors	2 to 4
Track Type	Aluminium white finish

External door	
Internal door	
Wardrobe doors	○
Cupboard doors	○
Glass Cabinet doors	
Wall mounted track	
Top mounted track	
Floor fixed track	○
Top hung wheel	
Bottom rolling wheel	○
Door side fix	
End pivoting	
Centre pivoting	
Bottom guide	
Top guide	○
End stop	
Soft-close	
Pelmet	

*Loose Tracks and Components available.
Please refer to catalogue or website for more information.



Cowdroy is an Australian company supplying industry leading products across residential and commercial properties.

Established in 1890, Cowdroy specialises in door tracking systems, weather seals, insect screen, replacement wheels & rollers and more products for a wide range of applications.

For all our product information visit the Cowdroy website at:
www.cowdroy.com.au

HEAD OFFICE SYDNEY

38 Redfern St
Wetherill Park, NSW 2164
Phone: (02) 9604 3000
Fax: (02) 9604 8129
Sales Fax: (02) 9609 3694

Perth

1 Modal Crescent
Canning Vale, WA 6155
Ph: (08) 9455 5354
Fax: (08) 9455 5461

WEBSITE

www.cowdroy.com.au
www.cowdroy-insectscreen.com.au

EMAIL

sales@cowdroy.com.au

NATIONAL CALL

1800 COWDROY (1800 269 376)

Christchurch NZ

56 Treffers Road, Sockburn
Christchurch 8042
Phone: (03) 943 2060
Fax: (03) 943 2061

Auckland NZ

18 Kerwyn Ave, East Tamaki
Auckland 2013
Phone: (09) 274 7279
Fax: (09) 274 4453

cowdroy

**ALCHIN
LONG
GROUP**

Robemaker_Brochure_16.09.22

