

22kg
PER PANEL

TRIUMPH STEALTH

BI-FOLDING
CUPBOARD DOORS

TRIUMPH STEALTH

cowdroy

The Triumph Stealth is a concealed bi-folding cabinet door track system for doors up to 1000mm high. The door track system features an enclosed aluminium track and specially designed centre hinges for accurate door alignment.

The Triumph Stealth is ideal for use on cabinets for kitchens, laundries and bathrooms.

FEATURES

- Track: Enclosed Aluminium Guide track - top mount
- Pivot Set: Jamb fixed concealed hinges
- Key features: Suits industry-standard hinge cutouts
- Hinges: Adjustable cabinet hinges - chrome plated
- Door Guide: Door mounted wheel assembly with clip-on hinge



TRACK VIEW



GUIDE VIEW



TECH SPECS

- Included Feature
- Optional Extra

System Type	Bi-Folding
Max. Weight Door/Panel	22kg
Door/Panel width (mm)	Up to 600
Door Thickness (mm) min.	16-25
Track Length (mm)	5560mm
Suits No. of doors	2 Panels
Track Type	Aluminium enclosed mill /anodised

External door	
Internal door	
Wardrobe doors	○
Cupboard doors	○
Glass Cabinet doors	
Wall mounted track	
Top mounted track	○
Floor fixed track	
Top hung wheel	
Bottom rolling wheel	
Door side fix	○
End pivoting	○
Centre pivoting	
Bottom guide	
Top guide	
End stop	
Soft-close	
Pelmet	

TRIUMPH STEALTH PACK / SET

THE COMPONENTS PACK
P38500:
Component Set for Single 2-leaf Door

COMPONENTS & REPLACEMENT PARTS

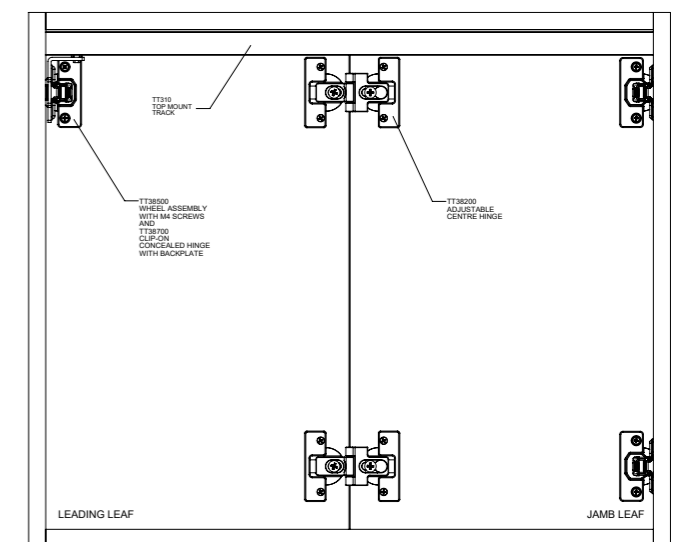
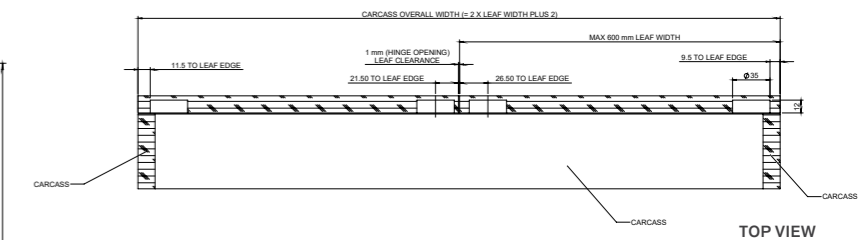
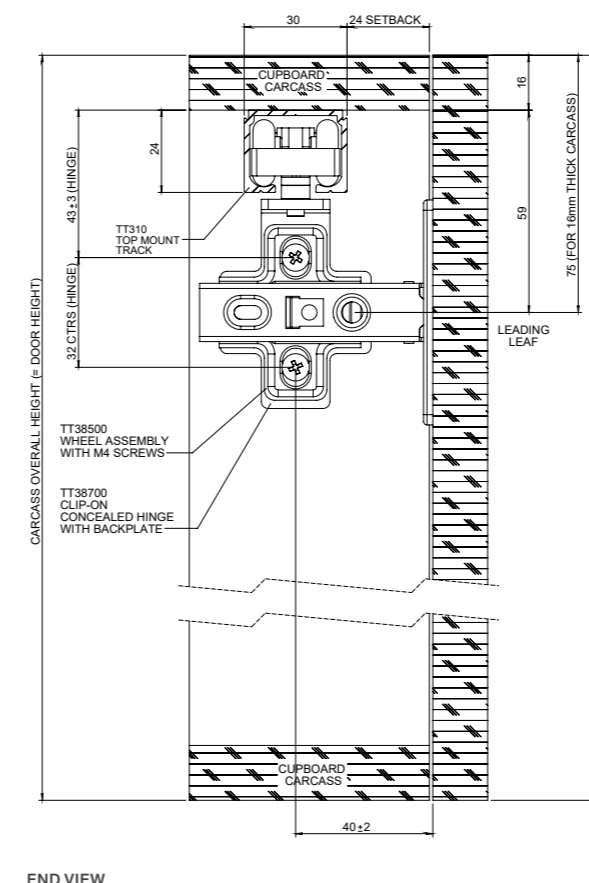
Other track sizes may be available to order

- TT38200:** Adjustable Intermediate Hinge
- TT38500:** Wheel Assembly
- TT38700:** Concealed Hinge with backplate
- TT31021:** Top Mount Track 2500mm Mill
- TT31041:** Top Mount Track 4500mm Mill
- TT31072:** Top Mount Track 5560mm Clear Anod.

OPTIONAL EXTRAS

- TT34600:** Adjustment Spanner 8 & 10mm

ARCHITECTURAL DRAWINGS



END VIEW

BACK VIEW